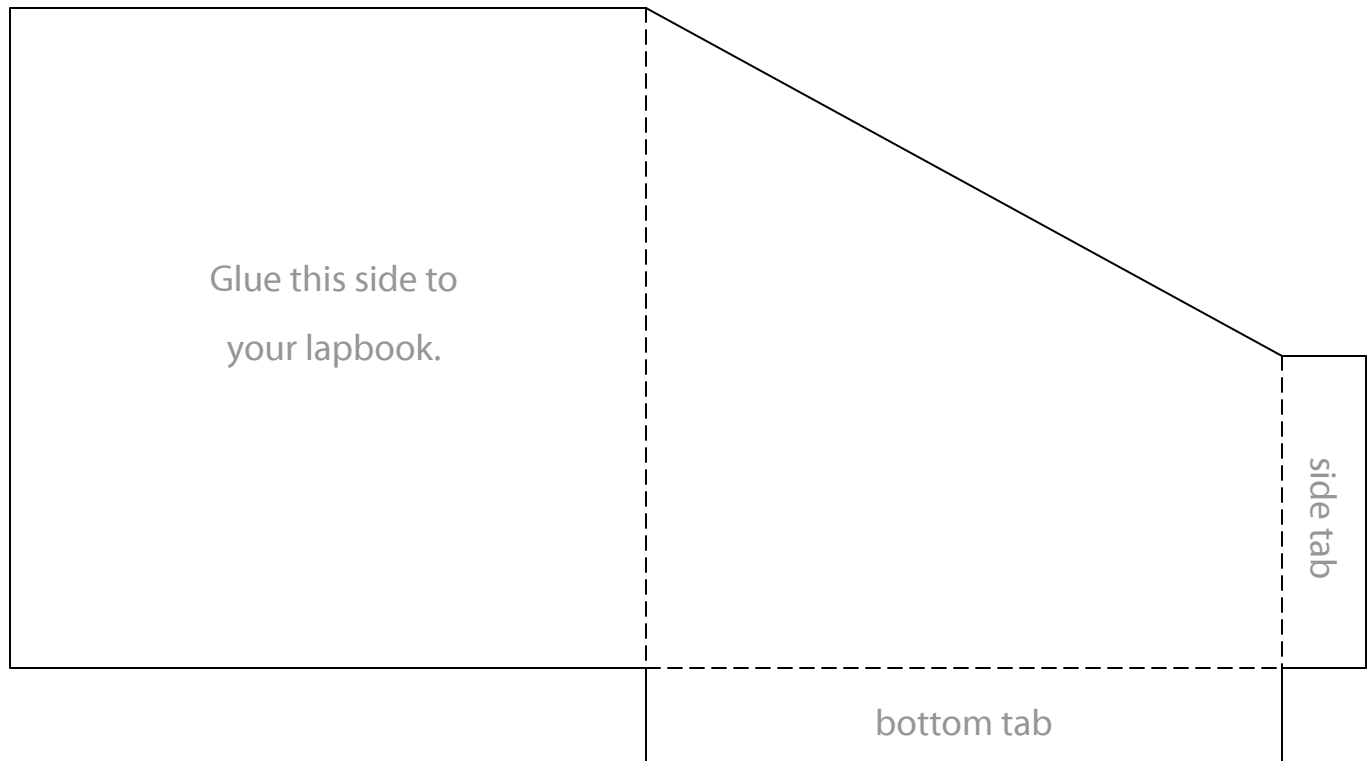


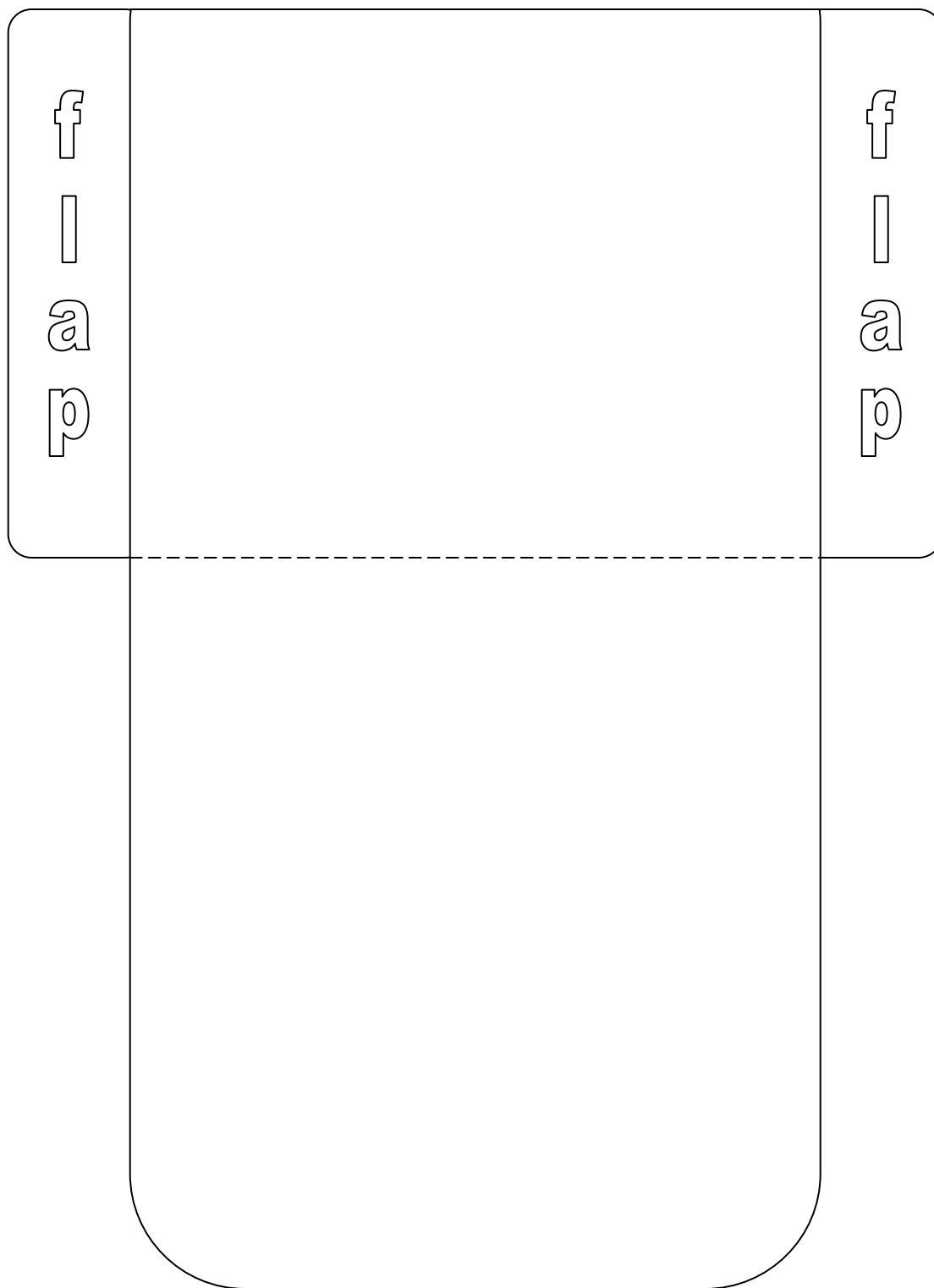
Folder Pocket

Cut on solid lines. Fold in half on the dotted line. Fold bottom tab and glue down. Fold side tab and glue down. Use the cards on the next page, if desired.



Pocket (fits 4x6 cards)

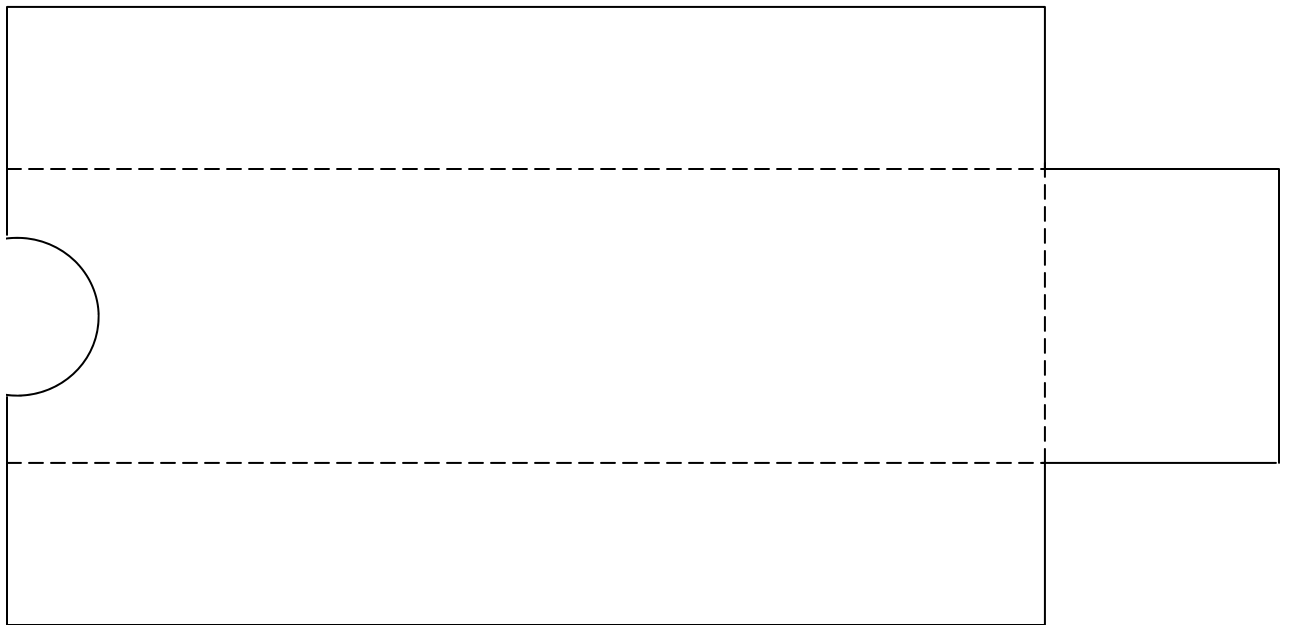
Cut pocket out as one piece. Fold back up. Wrap flaps around the back and glue down.



Small Side Pocket

Cut pocket out as one piece. Fold flap on right side under. Fold top and bottom flaps under. Glue the back of the pocket to your lapbook. Store cards (found on next page) in pocket.

www.homeschoolshare.com

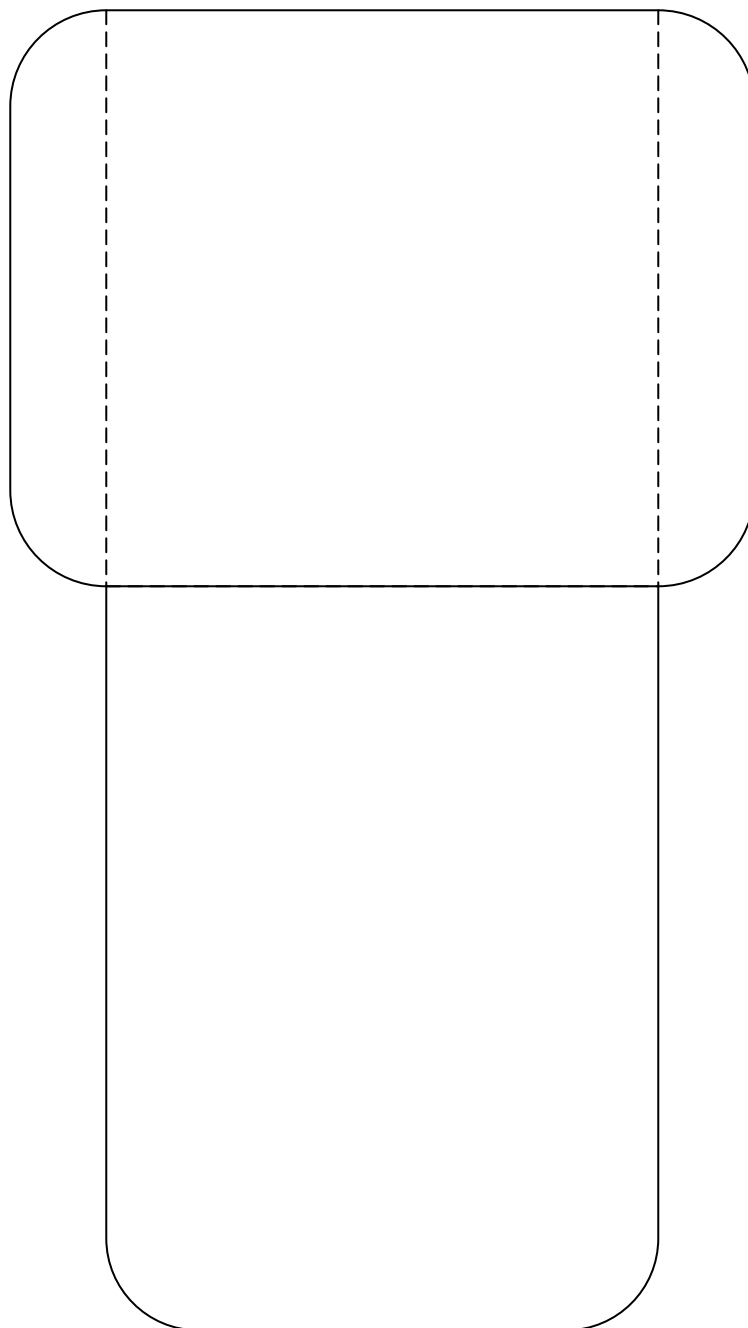


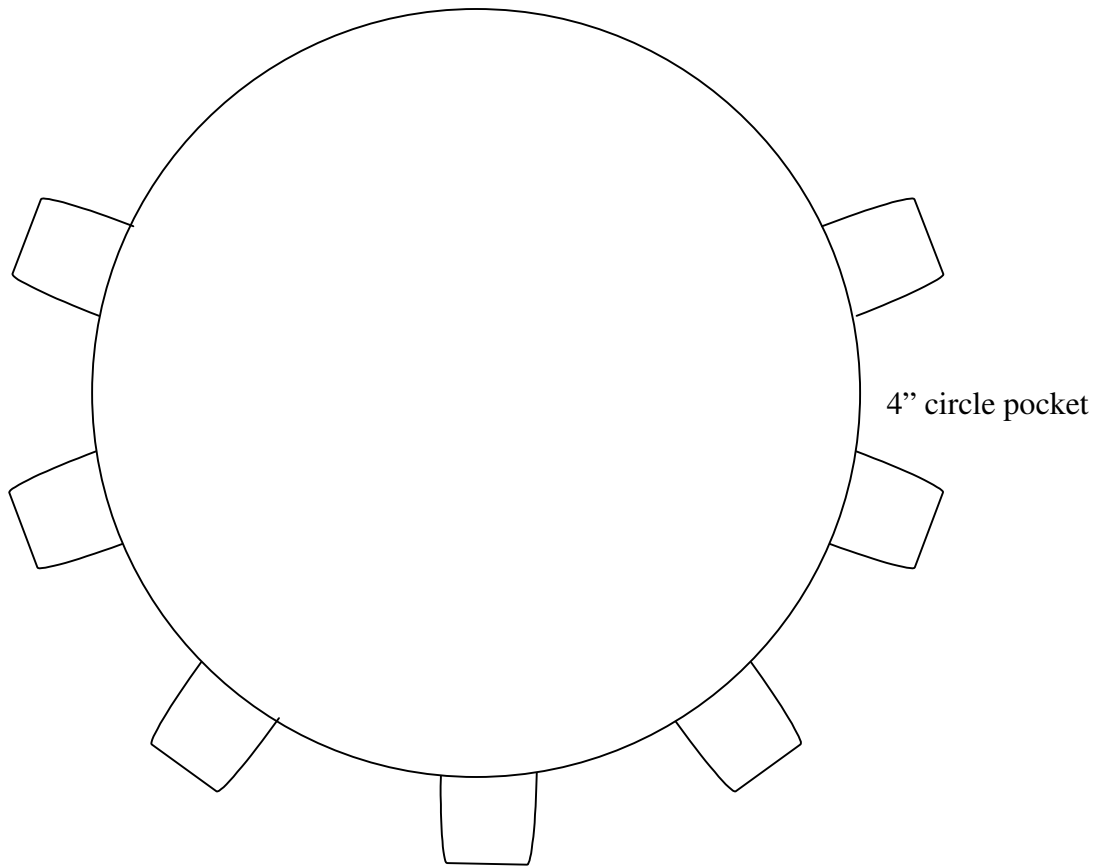
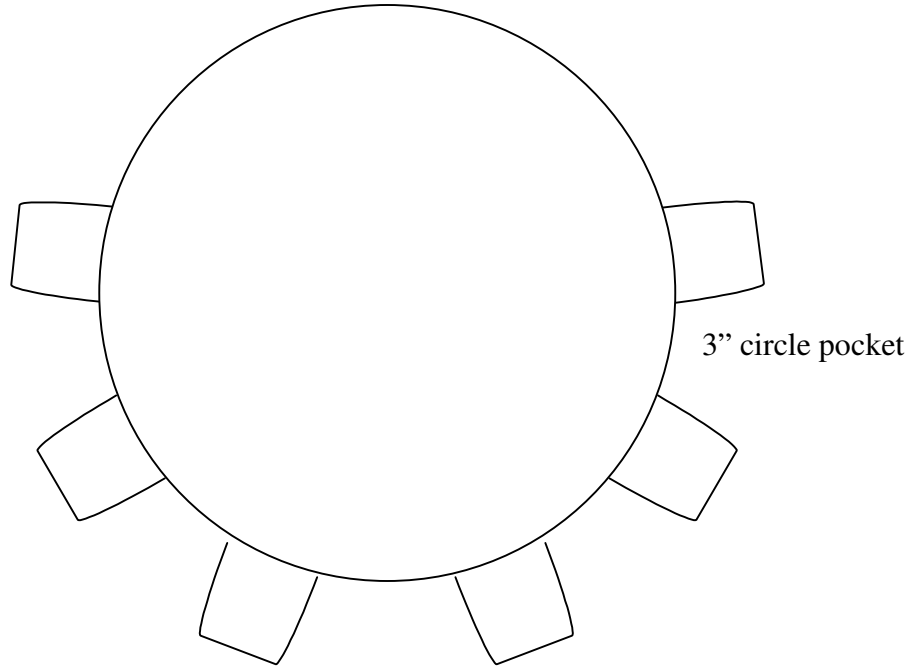
Small Pocket

Cut pocket out. Fold back flap up and wrap side flaps around the back and glue down.

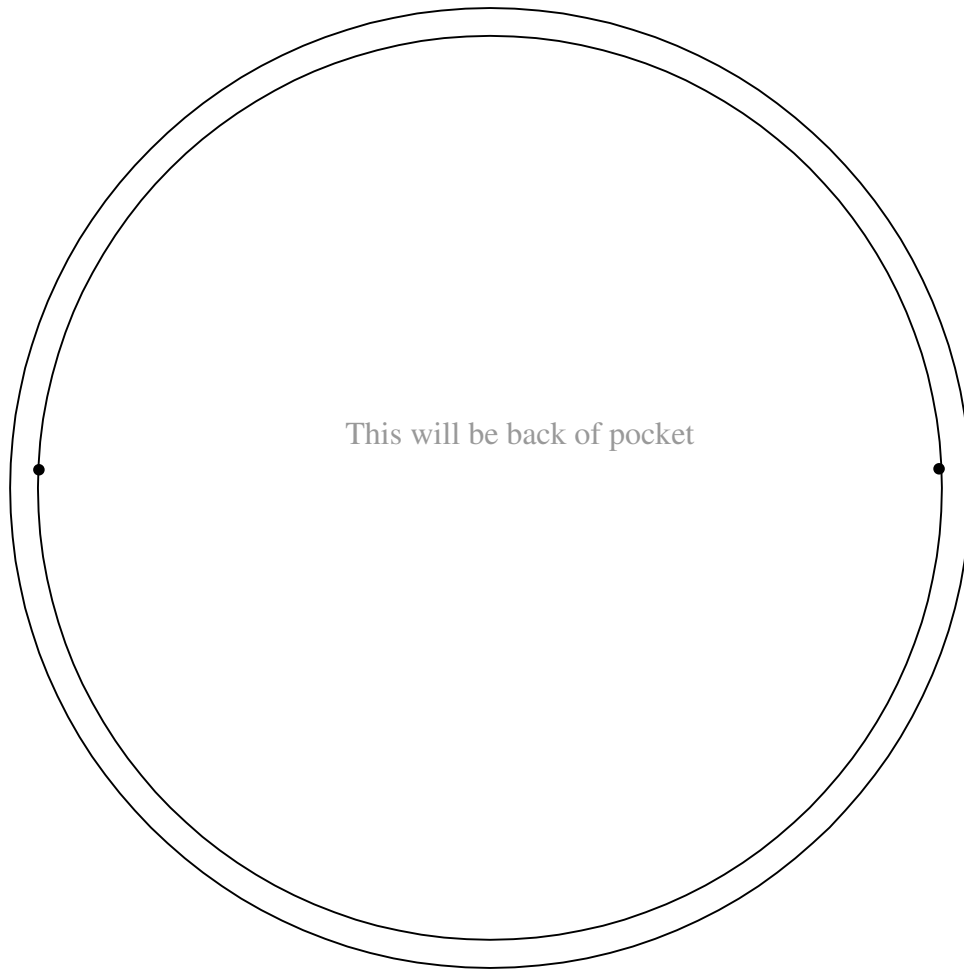
Glue the back of your pocket into your lapbook.

www.homeschoolshare.com

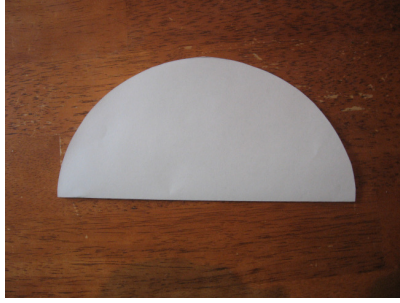




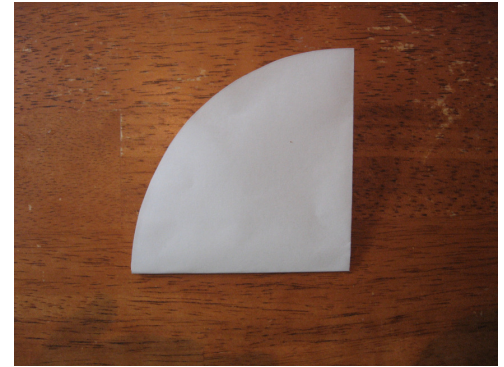
5" circle pocket. Glue around inside circle from dot to dot.



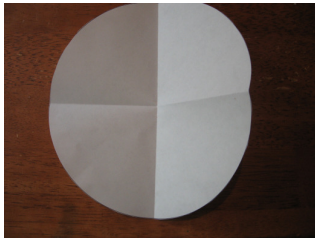
CONE POCKET



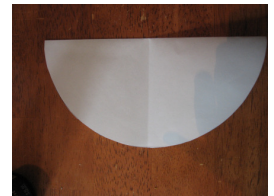
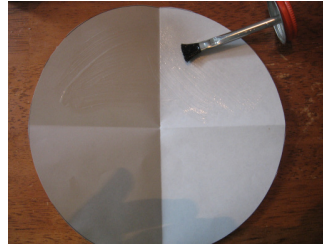
1. Cut two large circles. Set one aside. Take the other and fold it in half vertically. Then fold it in half horizontally.



2. Unfold



3. Put rubber cement (or glue) on half and fold



4. Put glue on one quarter and fold.

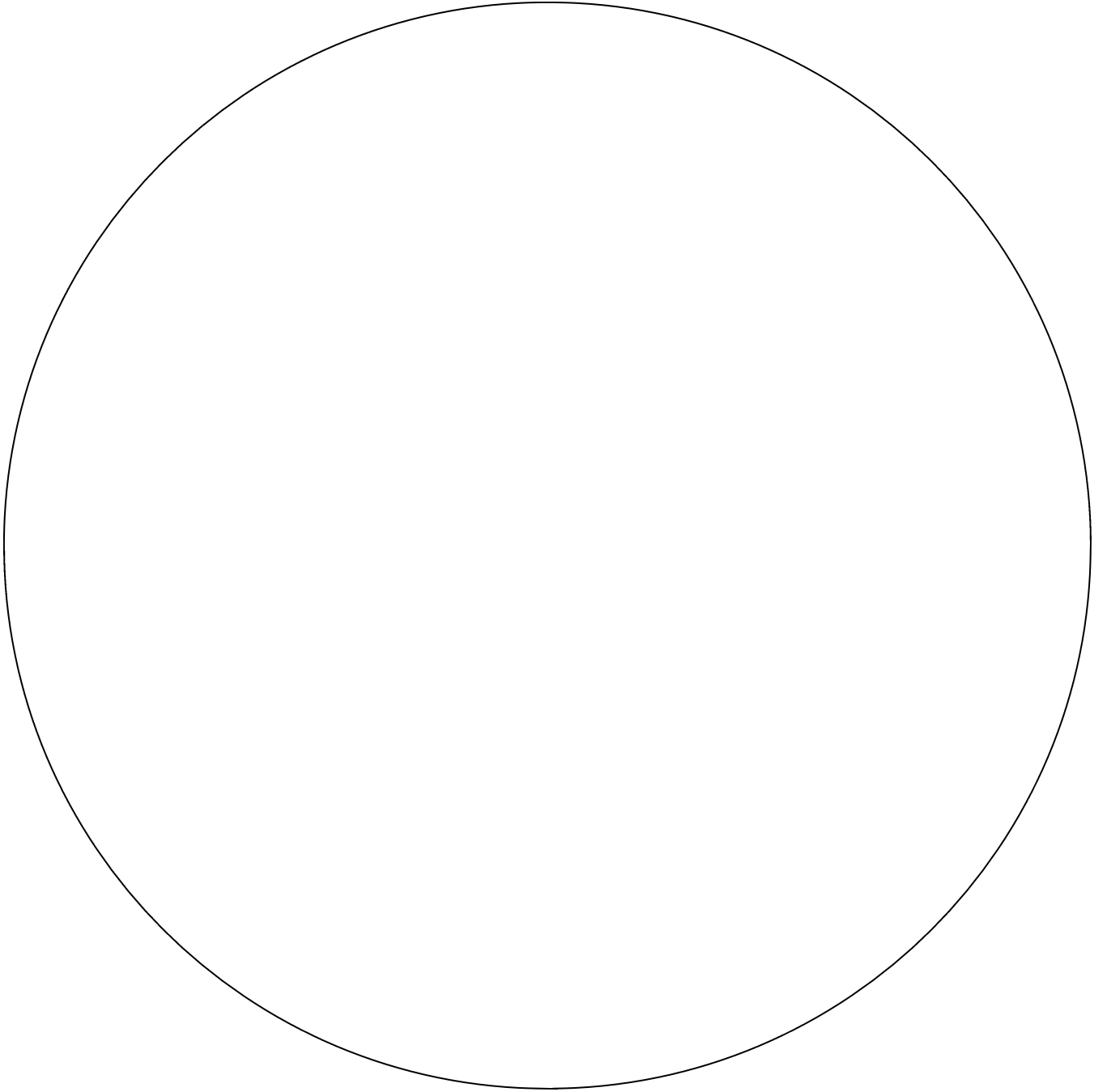


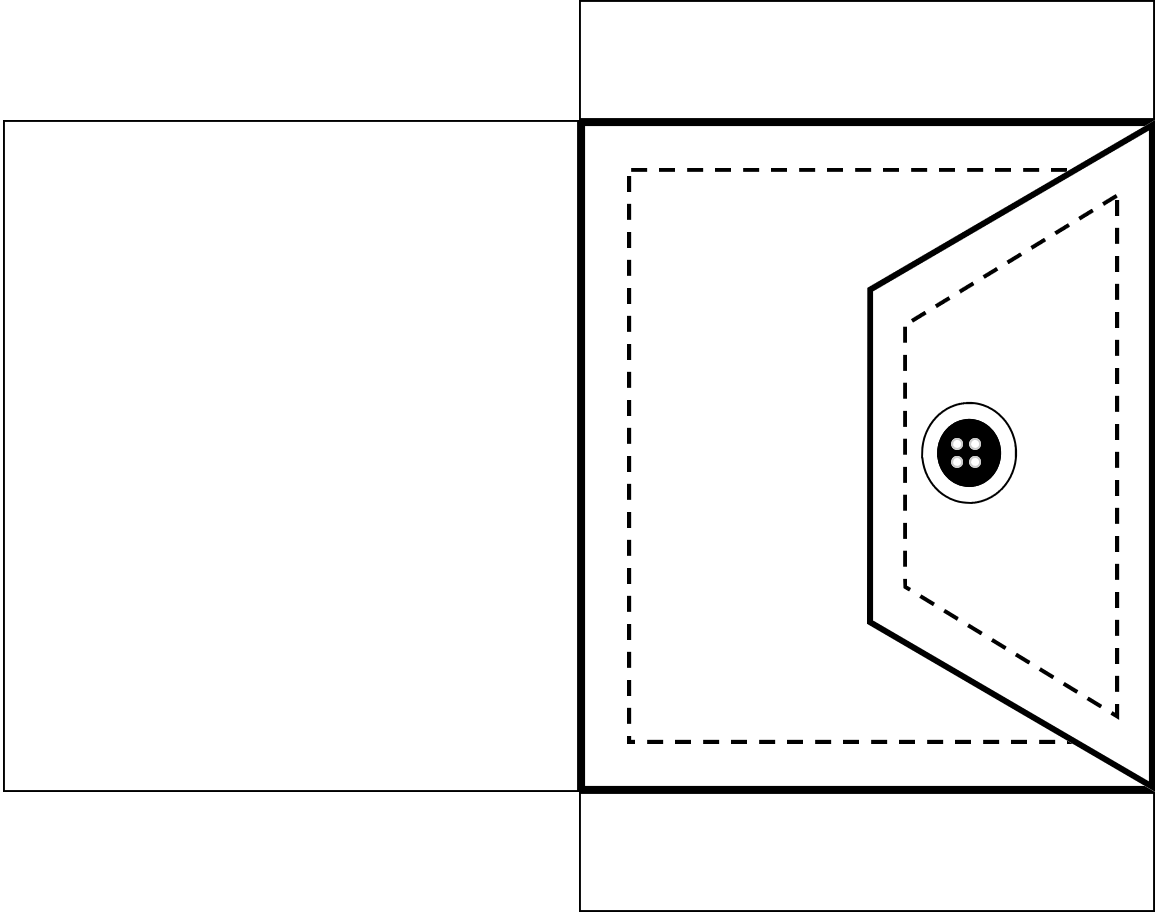
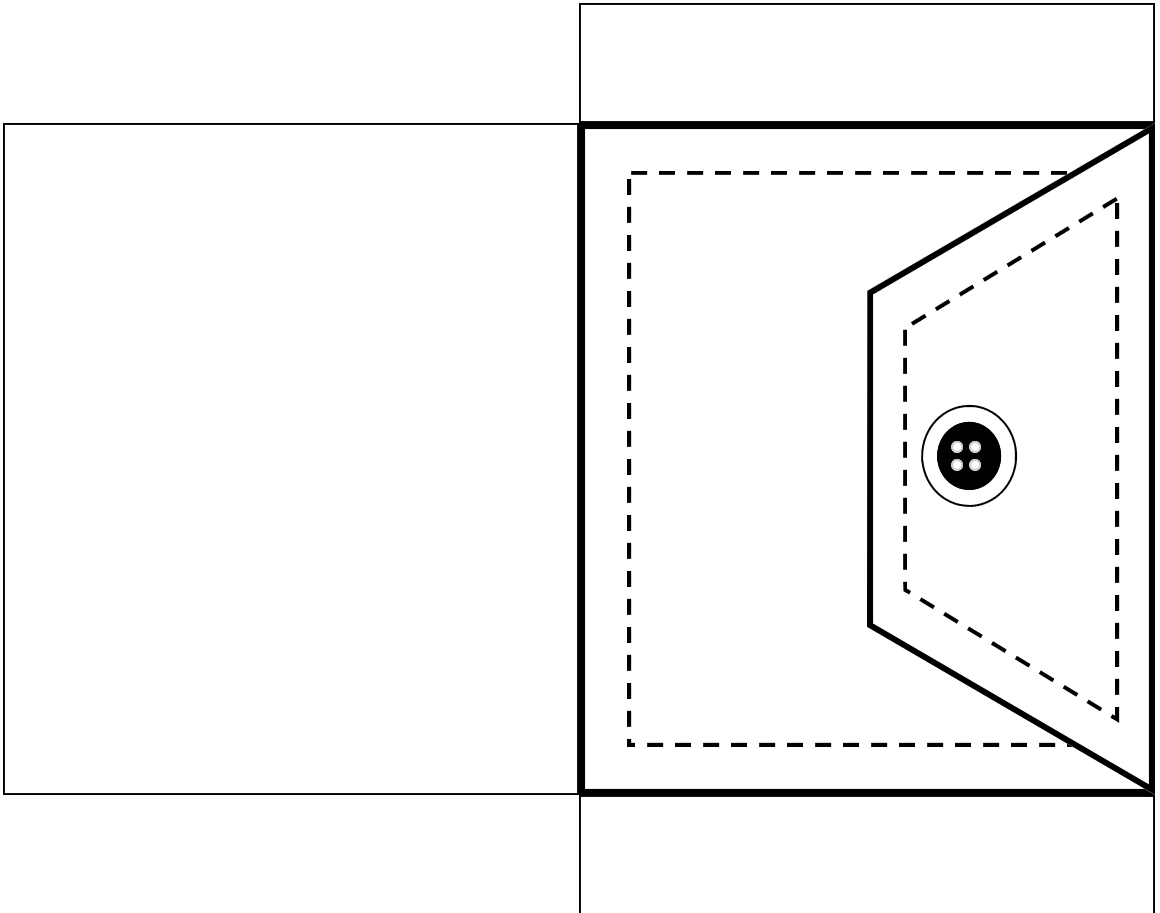
5. One quarter will be open. This is your pocket.



6. Fill the other circle with information, as desired. Decorate cover of the pocket. Fold second circle (half and half again) and slip into pocket.



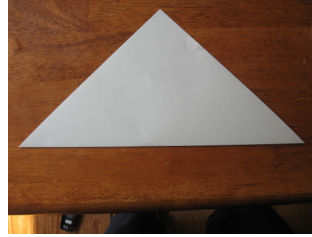




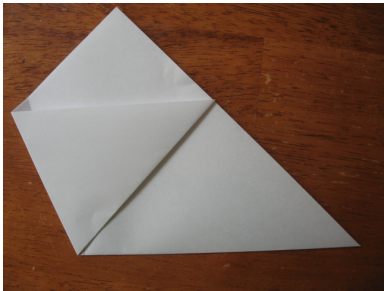
Drinking Cup Pocket



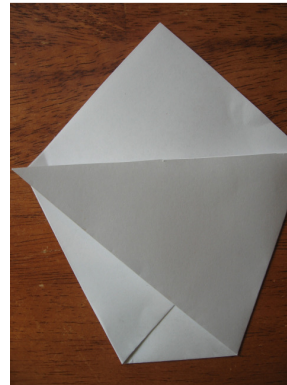
You need a 8.5 x 8.5 square sheet of paper to make your drinking cup. To make one—take a piece of regular sized 8.5 x 11 paper. Take the top left corner and fold it across the page. Cut the remaining strip off.



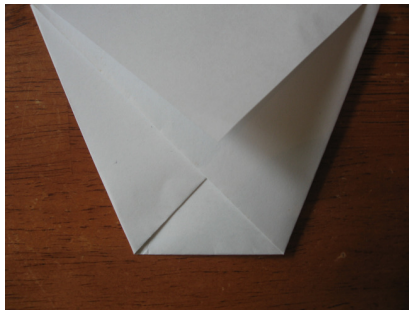
This is what your paper will look like when you finish. It should open from the top.



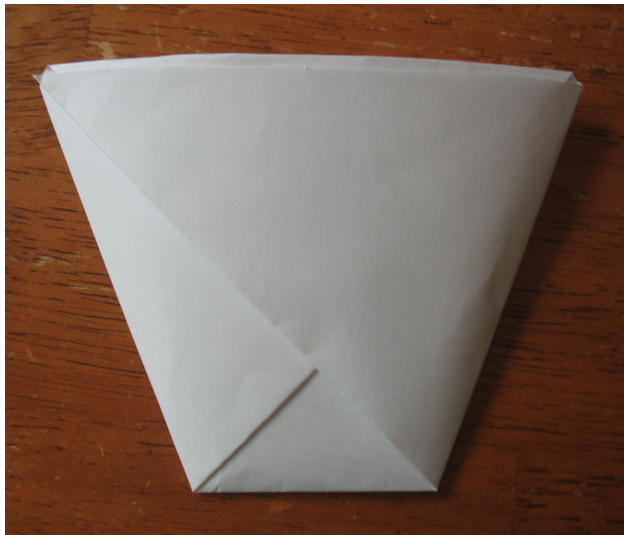
Take the left corner and fold it across to meet the right edge (forming an arm).



Take the right corner and fold it across to meet the left edge (forming another arm). Now your cup will look like its arms are folded.



Separate the triangles that are at the top. Fold one forward. Fold one backward.



If desired, tuck the front triangle into the slot in the arm.